

## Prague

Veleslavínova 2a/1098  
Praha 1  
110 00 Czech Republic

**Telephone:** 420 221 427 000  
**Fax Number:** 420 221 426 000

**Email:** [reservations.prg@fourseasons.com](mailto:reservations.prg@fourseasons.com)

Prague's finest social occasions unfold in true luxury – where centuries of architecture provide the backdrop for stellar Four Seasons cuisine and personalized care.

Choose from eight function and pre-function rooms – some with terraces and riverside settings – and let our attentive staff ensure that every last detail of your event, conference or special occasion is perfect.

**6,730** SQ.FT. Total Space  
**641** M<sup>2</sup>

---

**1,905** SQ.FT. Largest Ballroom  
**177** M<sup>2</sup>

---

**138** Total # of Guest Rooms

---

**19** Total # of Suites

---

**120** Meet & Feed

---

**4** Breakouts

## Spouse Programs

On-site, spouses can participate in cooking classes with a Four Seasons chef. Off-site, they can enjoy activities like a castle and architecture tour.

## High-Tech Rooms

All meeting spaces are fully equipped to support the most demanding presentation and communication requirements, with electrical hook-ups and wired or wireless Internet access.

## Exceptional Automotive Events

Set in the historical heart of the city, Four Seasons Prague is a charming venue for car launches and automotive events.

## Off-Site Activities

*Within a 5-minute walk of the Hotel*

### Smetana Museum

On a spit of land beside the Vltava, a former Neo-Renaissance water-works has been turned into a memorial to Bedrich Smetana, the father of Czech music. The museum contains documents, letters, scores and musical instruments detailing the composer's life and work. Smetana was a fervent patriot and his music helped inspire the Czech national revival. The museum is in Novotneho lavka Street in the Old Town.

*Within a 10-minute drive of the Hotel*

### The National Museum

A more dominant site could hardly have been found for the National Museum; its architecture, an overpowering monument to 19th century Czech nationalism with its equally grand interior. A setting for extensive archaeological, natural, historical and cultural collections. Located at one end of Wenceslas Square, this vast Neo-Renaissance building was completed in 1890.

*Within a 20-minute walk of the Hotel*

### Prague Castle

Prague Castle, the largest ancient castle in the world, sits on the highest hill in the city. Its courtyards, gardens and cafés make for a fascinating visit. The gigantic St. Vitus Cathedral, part of the castle, towers over the city and took 600 years to build. The cathedral has seen the coronation of more than 30 Bohemian monarchs, many of whom are buried here. The crown jewels of the Bohemian kings and relics of St. Wenceslas, the 10th century Duke of Bohemia, are on display. Visitors can admire the marvellous murals, statues, ceiling frescoes and stained glass.

*Within a 20-minute walk of the Hotel*

### Mucha Museum

Opened in 1998, it is the unique museum dedicated to the famous Art Nouveau painter Alfons Mucha, showing a comprehensive cross-section of his work. The Museum is located in Panska Street in the Old Town.

*Within a 30-minute drive of the Hotel*

### Lidice

The foundations of several buildings are all that is left of Lidice, the town that Hitler razed in revenge for the assassination of Reinhard Heydrich. The Lidice Memorial Museum documents the fate of the inhabitants.

*By Special Arrangement*

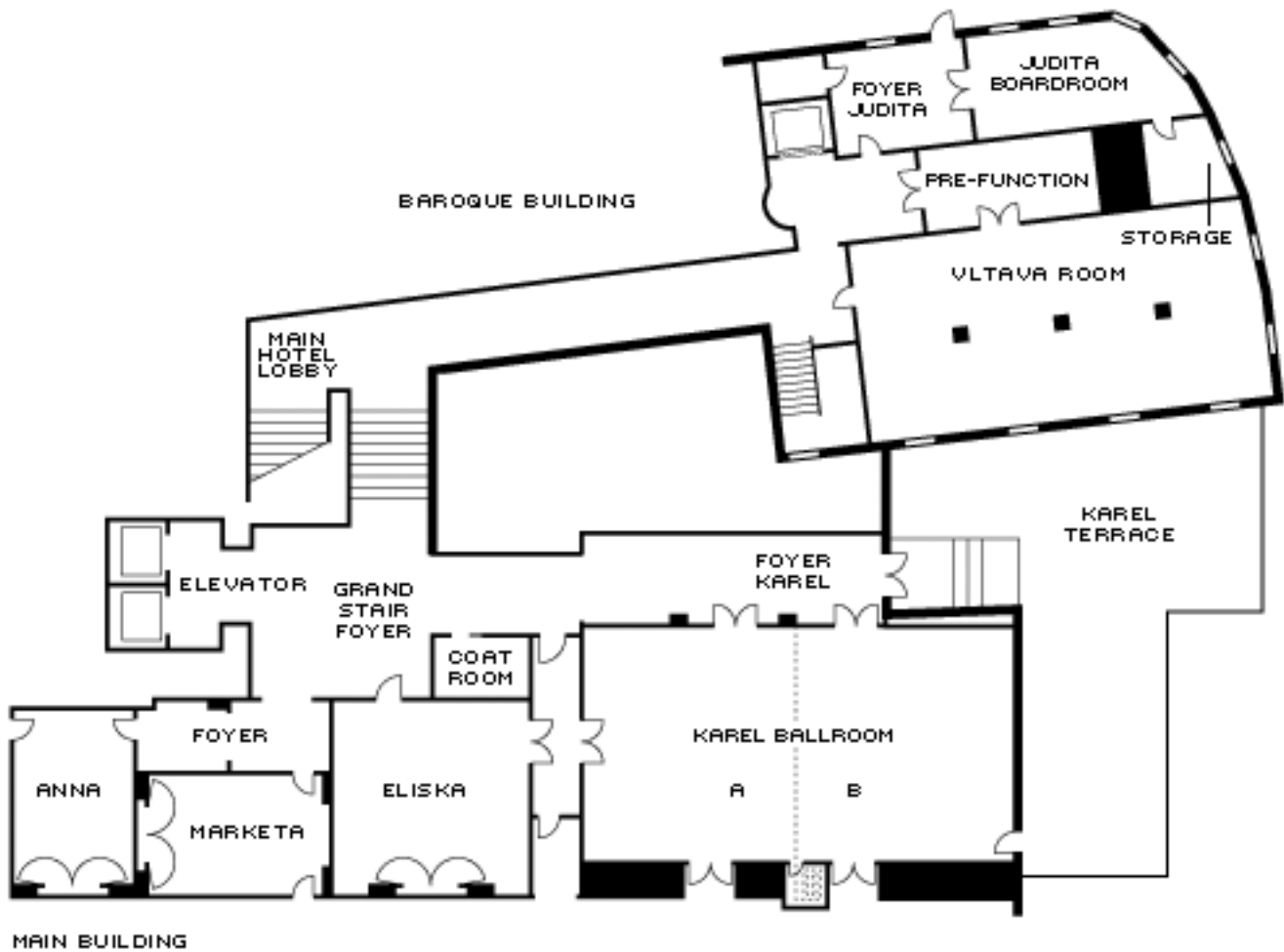
### Hockey Match or Figure Skating with the Pros









The Czech Republic is known for ice hockey and Four Seasons Hotel Prague will show your group how to score winning goals. We'll suit you up with equipment and provide a warm-up lesson, before hitting the ice. Anyone who doesn't want to play can stay in the stands and cheer the game with drums, trumpets and whistles. Private figure skating lessons with professional athletes can also be arranged for your group. Enjoy a rink all to yourselves. Whether people are learning to skate or learning to spin, this is a fun ice breaker for a new group or add an element of competition for a team building activity.

## FUNCTION ROOMS

Set in Prague’s premium location – on the picturesque Vltava River, a stone throw away from the Charles Bridge, overlooking historic Prague Castle – Four Seasons service and comfort interweaves with Czech cultural traditional and centuries of architecture in this landmark of gracious design. 157 guest rooms are among the largest in Prague, many with unique city, castle and river views. This magnificent hotel is a stunning venue for all kinds of functions from multi-day incentive programs, to important family celebrations, to automotive events. [Click to view room details and floor plans.](#)

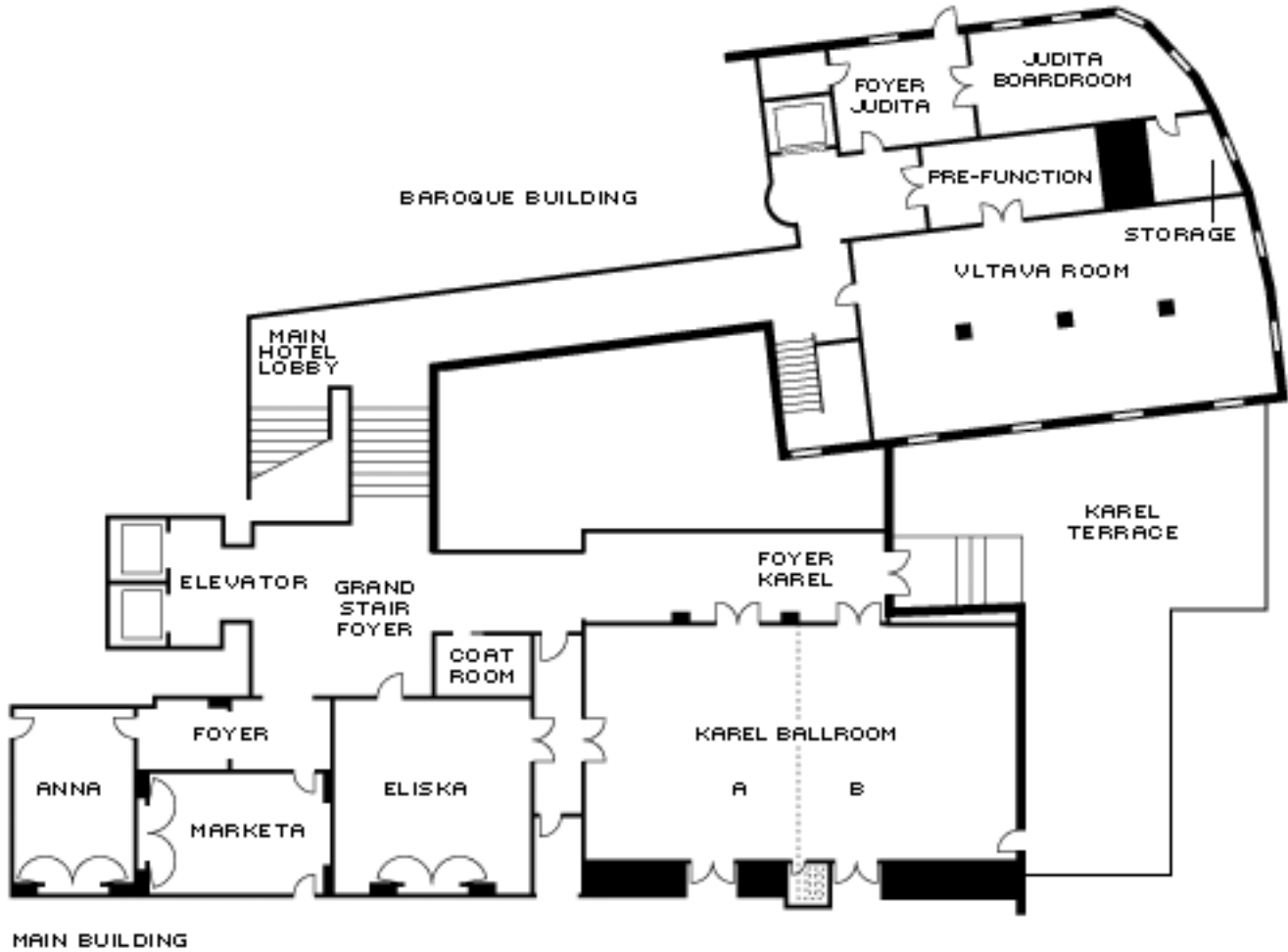
### MAIN BUILDING, LOWER LEVEL












Function Room	Size (sq. ft.)	Size (m <sup>2</sup> )							
Karel Ballroom	1,905	177	140	-	108	180	48	66	200
Karel A	940	87	50	-	48	80	27	36	80
Karel B	970	90	50	-	48	80	27	36	80
 Karel Foyer	485	45	-	-	-	-	-	-	50
Karel Terrace	775	72	-	-	-	-	-	-	100
Eliška	670	62	40	-	36	50	24	24	65
Markéta	420	39	20	18	18	25	15	-	25
Markéta Foyer	152	23	-	-	-	-	-	-	-
Anna	400	37	20	18	18	25	15	-	25
Grand Stairs Foyer	645	60	-	-	-	-	-	-	-

 Indicates function rooms with natural light or outdoor space.

BAROQUE BUILDING. GROUND LEVEL



Function Room	Size (sq. ft.)	Size (m <sup>2</sup> )						
 Vltava	1,450	151	90	-	-	-	-	130
 Judita	215	20	-	14	-	-	-	-
Judita Foyer	215	20	-	-	-	-	-	15

 Indicates function rooms with natural light or outdoor space.

## DINING

When you attend an event at Four Seasons, good food is a given. We hold ourselves to the highest standards and we deliver, with innovative catering options and impeccable service.

## BANQUETS



*Ideal for a gala dinner*

### The Mozart Evening

Enjoy an enchanting night of music in the city where Mozart composed his most famous opera, "Don Giovanni". The evening begins with a performance by young musicians dressed in 18th century costumes, playing piano and violin accompanied by harp and flute. Guests are seated at elegant tables to enjoy a menu in the tradition of Prague's Belle Époque.



*Great for conference and incentive groups*

### Streets of Prague

Experience Czech traditions including a folklore band, handcrafts and food with cooking stations featuring goulash with dumplings, potato pancakes and other delights. Wash it down with a glass of world famous Czech beer at a typical Hospoda (pub) draft beer counter.



*Perfect for a private party*

### Wine Dinner

Enjoy a relaxed evening of wine tasting and Italian delicacies in the CottoCrudo bar at Four Seasons Hotel Prague.

## ON-SITE RESTAURANT



### COTTOCRUDO

An energetic modern restaurant offering a new interpretation of Italian classics. The sleek and contemporary design gives it a quintessential urban vibe.

[View the menu](#)

## GUEST ROOMS & SUITES

The 157 Old Town luxury hotel guest rooms, including 19 suites, are among Prague's largest. The one-of-a-kind building concept creates a variety of guest room layouts, even within the same category.

Guest Rooms	Number	Size	Location	View	Beds	Bathrooms
River-View Room	18	38 m2 (409 sq.ft.)	Main and Classical buildings	Vltava River, Malá Strana and either the Prague Castle or the Charles Bridge	One king bed or two twin beds	One full marble bathroom
Renaissance Room	27	40 – 47 m2 (430 – 503 sq.ft.)	Throughout the Renaissance Building	Monastery of the Knights of the Cross or the historic city centre	One king bed	One full marble bathroom
Deluxe Room	43	40 m2 (430 sq.ft.)	Main Building	Monastery, historic city centre or the neo-Renaissance university building	One king bed or two twin beds	One full marble bathroom
Superior Room	25	35 m2 (376 sq.ft.)	2nd to 7th floor	Surrounding streets and buildings	One king bed	One full marble bathroom
Modern Room	25	33 m2 (355 sq.ft.)	2nd to 4th floor	Neo-Renaissance university building	One king bed	One full marble bathroom

Suites	Number	Size	Location	View	Beds	Bathrooms
Presidential Suite	1	200 – 372 m2 (2,152 – 4,000 sq.ft.)	2nd level of the 18th-century Baroque Building	Vltava River, Malá Strana Prague Castle and Charles Bridge	One bedroom: One king bed. Two bedroom: Two king beds. Four bedroom: Four king beds.	One full marble bathroom per bedroom, plus guest powder room
Premier Suite	2	115 – 196 m2 (1,242 – 2,110 sq.ft.)	Top floor (7th floor) of the Main Building or 2nd floor of the Classical Building	The Vltava River, Charles Bridge, Prague Castle, the Lesser Quarter and Strahov Monastery	One bedroom: One king bed. Two bedroom: Two king beds. Three bedroom: Three king beds.	One full marble bathroom per bedroom, plus guest powder room
River Suite	8	75 m2 (807 sq.ft.)	Classical and Main Buildings	Vltava River, Malá Strana and either the Prague Castle or the Charles Bridge	One king bed	One full marble bathroom, plus guest powder room
Renaissance Suite	1	86 m2 (926 sq.ft.)	Renaissance Building	Surrounding buildings of the Hotel complex	One king bed	One full marble bathroom, plus guest powder room
Duplex Suite	6	79 m2 (850 sq.ft.)	Classical Building and Main Building	Partial of Prague Castle, Charles Bridge, Malá Strana and Vltava River	One king bed	One full marble bathroom (some with a guest powder room)
Baroque Suite	1	65 m2 (700 sq.ft.)	Baroque Building	Surrounding buildings of the Hotel complex	One king bed	One full marble bathroom



## CONFERENCE PLANNING

### Quick Reference

#### Time zone

GMT +1 hour

Central European Time

#### Language(s) spoken

Czech; German; English

#### Electrical system

Local voltage is 220 to 240 volts AC. Converters available; please request through the Concierge.



### Getting Here

#### From Vaclav Havel International Airport (PRG)

- Travel Time: 25 minutes
- Distance: 9 miles/15 kilometres

#### Services provided by the Hotel

The Concierge will assist in arranging transportation. Prices vary depending on needs.



## TECHNICAL ASSISTANCE

The Hotel continually updates its audiovisual presentation equipment. Special arrangements can be made to fulfill any request, and the standard inventory includes:

- Lecterns
- LCD colour display panels
- Equipment necessary for front projection and multi-image dissolve programming
- Video cameras
- Recorders
- Players and projectors
- Screens, flipcharts, easels and marker boards
- Wired or wireless Internet access in meeting rooms



## RECEIVING AND MAINTENANCE

### Receiving and maintenance

All packages should be sent to the attention of the conference services manager and should mention the name of the event. Limited space is available for the storage of large items. Please time shipping to the date of your arrival. Receiving facilities include a small-capacity loading dock with off-street access.

Please contact the conference services manager for information on customs brokers.

### Maintenance

The engineering department is available for general assistance with lighting, room temperature control and minor repairs.



## MUSIC AND ENTERTAINMENT

Our team can arrange music and entertainment, from a traditional Bohemian party to gala dinners with live music and other creative events.



## WELCOME AMENITIES AND VIP GIFTS

Special arrangements can be made for guests to purchase welcome amenities for VIP guests, including:

- Classical music CDs of Czech composers such as Smetana and Dvorak
- Handmade Bohemia crystal
- Hand-painted porcelain
- Wooden toys
- Czech wine and beer

## AUTOMOTIVE EVENTS

At Four Seasons, we know what it takes to create exceptional car launch events. A century-old crossroad of Europe and now the cultural and economic centre of the Czech Republic, Prague has a deep history in engineering and boasts many automotive centres of excellence.

Widely regarded as an architectural treasure in the heart of Old Town, Four Seasons Hotel Prague's Karel Terrace offers outstanding views of the capital, and the iconic entranceway is the perfect space for displaying vehicles of varying sizes.

Just 200 kilometres (124 miles) from the Hotel, the Brno Racing Circuit is easily accessible from the D1 motorway. With gradients of 7.5% and 14 turns, the circuit has been established in the motoring world for over 80 years.

[Learn more about Four Seasons car events](#)



## SPOUSE PROGRAMS

### On-site:

- Cooking with the Chef
- Overview of local architecture, history and music
- Rejuvenation programs (massages, sauna, fitness)

### Off-site:

- Diverse tours in town to Prague Castle, St. Vitus Cathedral, Golden Lane and Jewish Quarter
- City tours in vintage cars from the 1930s
- Tours to the National Museum, Mucha Museum, Mozart Museum and Puppet Museum
- Private tour through the Estates Theatre
- City tour with carriage and horses
- Guided visit to a glass factory
- Tours with local guides to Karlovy Vary (Carlsbad), Melnik



## FAMILY PROGRAMS

The Hotel can help you arrange activities such as visits to the local zoo, Petřín Hill, the Puppet Theatre or local museums. Výstaviště is a popular outing where children enjoy the fun park, theatre, outdoor cinema, the planetarium, expositions and a musical jet.